

Reference 1)

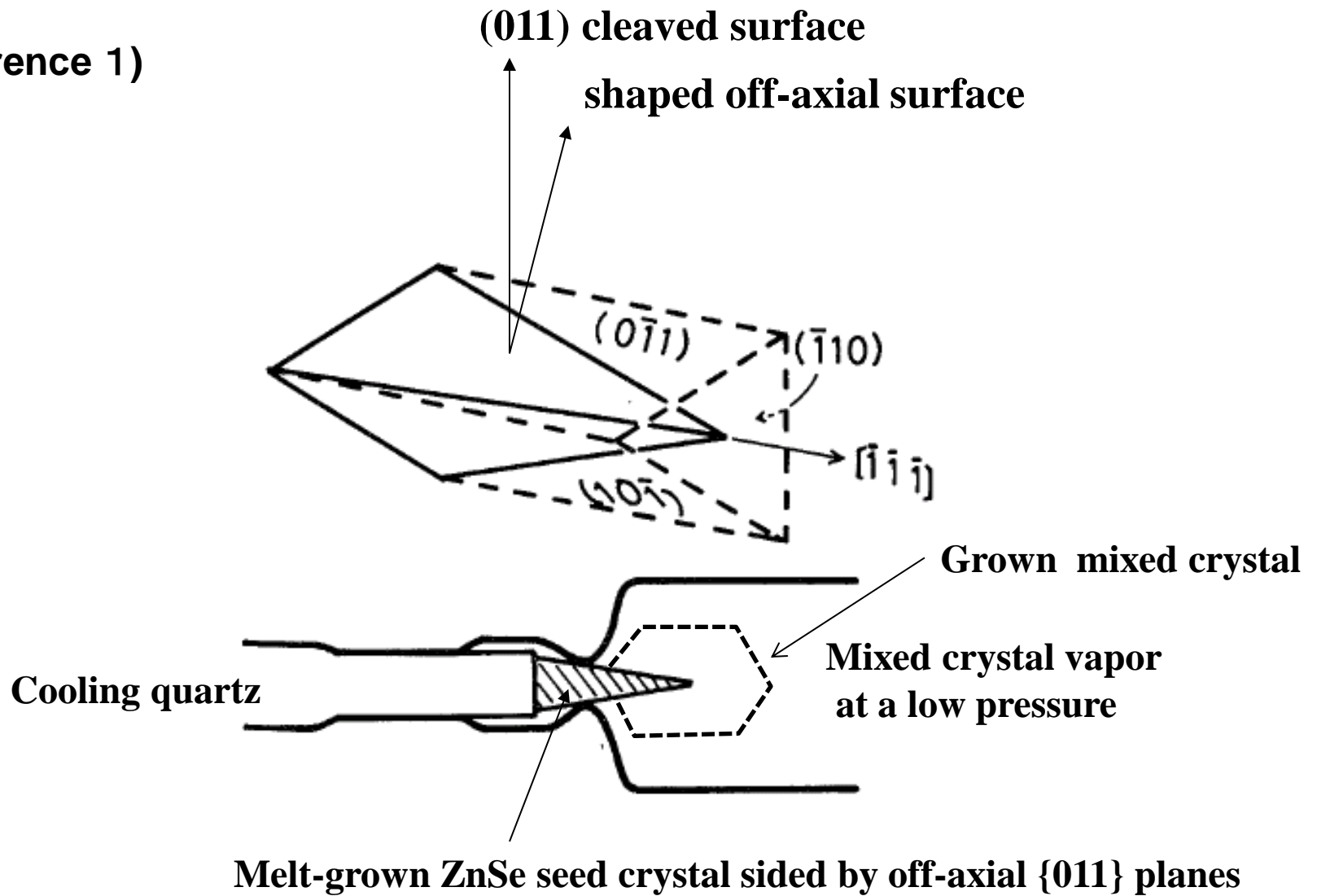
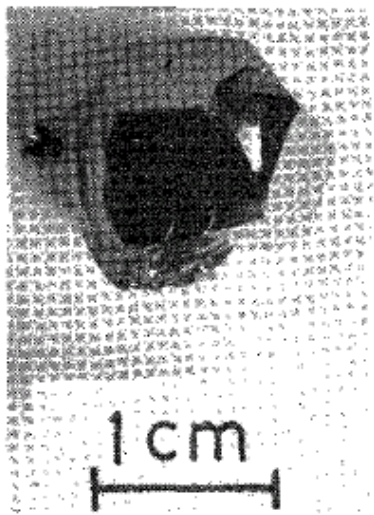
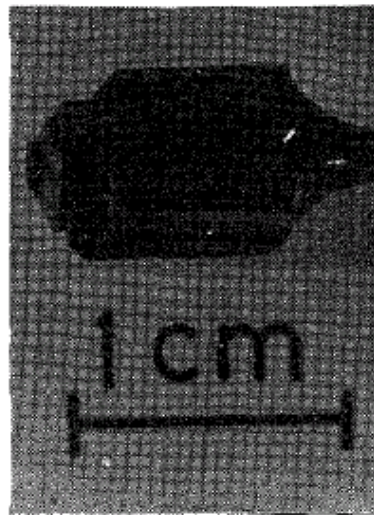


Fig.1 種結晶の切り出しと取り付け方法。 Seed-crystal shaping and setting.

(from Tohoku university summary of a doctoral thesis ,Yuji Furumura, 1978)



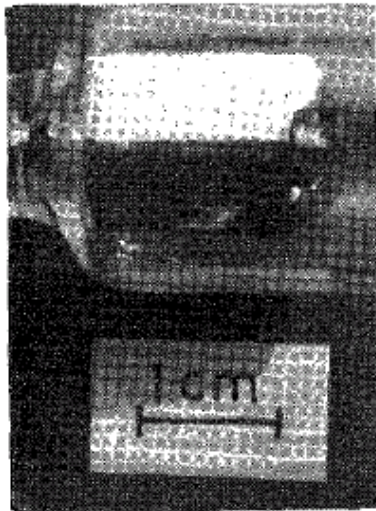
ZnSe



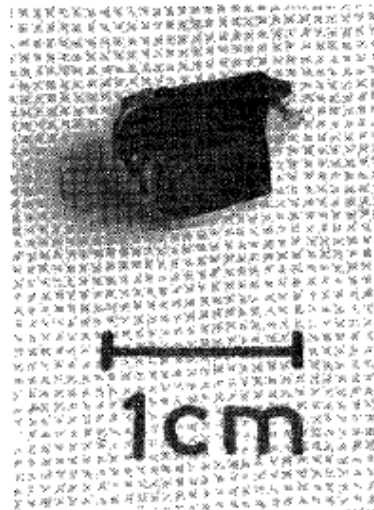
ZnSe_{0.987}Te_{0.013}



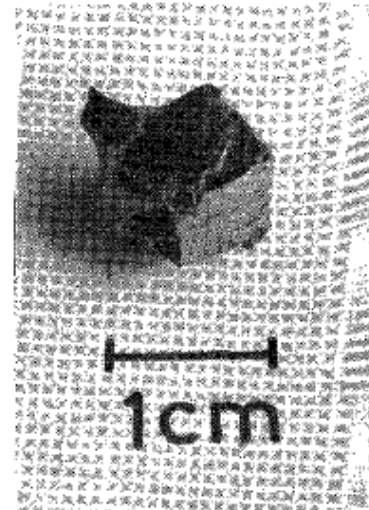
ZnSe_{0.941}Te_{0.059}



ZnSe



ZnS_{0.068}Se_{0.932}



ZnS_{0.105}Se_{0.895}

Phot. 1
Pictures of ZnSe and
mixed crystals of
ZnSe_xTe_{1-x},
ZnS_xSe_{1-x} grown by
vapor phase epitaxy
on a melt-grown ZnSe
seed crystal sided by
off-axial {011} planes

Phot. 1 気相法を用いて成長させた ZnSe とその混晶 ZnSe_xTe_{1-x}, ZnS_xSe_{1-x} の写真。